

# MXR

The Micro Rider



red dot design award  
winner 2013



REDUCE COSTS BY UP TO 36%,  
INCREASE PRODUCTIVITY BY 43%  
AND QUICKLY RECOVER YOUR INVESTMENT!

 **FIMAP**<sup>®</sup>



# Mxr

## Designed to be more productive because it's small and fast



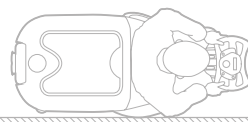
Mxr SCRUBS  
AND DRIES IN THE SAME AREAS  
WHERE A WALK-BEHIND SCRUBBING  
MACHINE WOULD NORMALLY BE USED,  
BUT IT'S FASTER  
AND MORE COMFORTABLE

The operator remains comfortably seated  
and can easily move in limited spaces,  
quickly passing from one area to another  
- even in a lift - in total safety and  
without having to get off the machine.



POSSIBILITY TO WORK  
AT DOUBLE THE SPEED  
OF A WALK-BEHIND  
SCRUBBING MACHINE

Take it wherever it's needed!  
It can be transported  
in commercial electric minivans,  
so you can take it wherever you want,  
even to the heart of historical town centres.



Cleans perfectly along walls without  
any need for manual cleaning operations

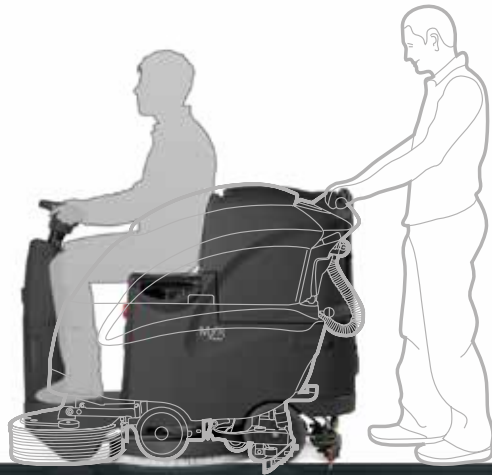




# Mxr

## Designed to improve the cleaning of small areas

### Why walk, when you can ride?

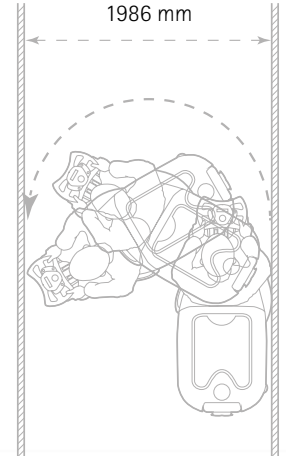


#### DESIGN

The lowered footboard and access from both sides make it safer and more practical.



MINIMUM  
AISLE TURN  
1986 mm



**ADD VALUE TO YOUR INVESTMENT – CHOOSE A SCRUBBING MACHINE THAT LOWERS MANAGEMENT AND USAGE COSTS THROUGHOUT ITS LIFE-CYCLE**

- it requires little maintenance
- it is built with top quality materials
- it uses waste-reducing technologies
- it scrubs more square metres in the same time
- it can be used anywhere, at any time
- it is comfortable, safe and user-friendly





# Mxr

## Designed to offer a new driving experience

Ergonomic steering wheel  
with controls and display  
to make driving intuitive and safer, because the  
operator isn't distracted and the scrubbing functions  
are activated without ever leaving the driving wheel



### FFM – FIMAP FLEET MANAGEMENT


Discover the FFM universe and experience  
the advantages of being constantly connected,  
with My.Machine app!

FFM is a fleet management system which collects the data sent  
by every machine and transforms them into valuable information  
that you can see on your smartphone or tablet, thanks to the  
My.Machine app. You can check the position and health status  
of the machine at any time, along with the square meters  
cleaned and the consumption figures. In this way, the necessary  
evaluations can be made in order to offer customers the best,  
efficient service.



### QUALITY DESIGN IN EVERY LAST DETAIL

Steering is light and smooth,  
so it can be manoeuvred and used  
in even the most congested areas  
and the narrowest passages with the minimum effort

<b>Eco Mode Device</b> 	Sound level reduction Energy saving
---	--



USER-FRIENDLY DIGITAL DISPLAY

# Mxr

## Designed to increase safety and to protect operator health

### EMERGENCY STOP

Immediate machine stop, just by pressing a single button



Low centre of gravity  
and excellent weight distribution,  
to ensure the utmost stability  
even on slopes

Automatic reduction of speed on bends



ANTI-OVERTURN BUMPER



FNC



The low sound level means  
the machine can be used anywhere,  
at any time, without disturbing the people  
nearby and safeguarding the operator's health



Can be customised  
with accessories to  
increase productivity



### SAFETY BRAKE

Automatic machine stop  
when the pedal is released

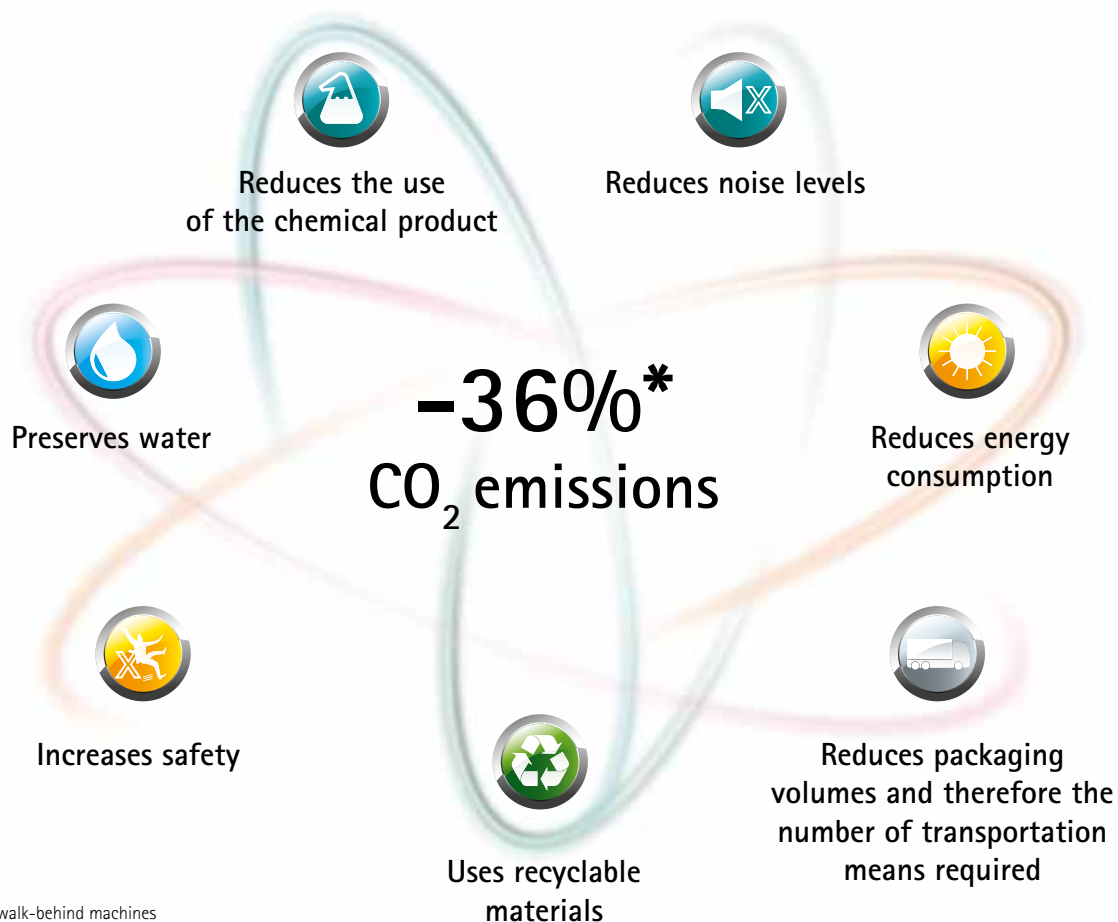
# Mxr

## Designed to respect the environment

Mxr aims to offer reduced environmental impact, in both the production and usage phases. It is designed using the least range of materials and concentrating on those that can be recycled, making end-of-life disposal easier.

Mxr needs less packaging, thereby rationalising the transport phase, and uses technologies that limit the waste of water, chemical product and energy.

Mxr is built in line with the standards of official certifications, guaranteeing low noise and disturbance levels to safeguard the environment and to ensure operator safety.



\* In specific tests vs walk-behind machines

# Mxr

## Designed to keep the investment value high over time



No tools are needed for daily maintenance

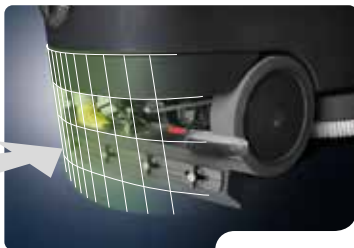


The elements requiring daily maintenance can easily be identified by their yellow colour. At the end of his work-shift, the operator can quickly see which parts need sanitising, without wasting any time. This increases machine efficiency and keeps its value high

FFF (FimapFastFill)  
Quick filling  
of the solution tank



Measuring cap, to add the proper detergent percentage



All the components are protected inside the machine unit. This means less risk of breaking in case of accidental impact, avoiding additional repair costs and ensuring a longer working life



TECHNICAL DATA		Mxr
Productivity theoretical	up to sqm/h	3000
Working width	mm	560
Disc brush	(no.) Ø mm	(1) 560
Brush motor	V/W	24/450
Brush rpm	rpm	140
Brush pressure	kg	15
Solution tank	l	67
Recovery tank	l	66
Suction motor	V/W	24/410
Vacuum water lift	mbar	700
Supply/traction	V	24/aut.

TECHNICAL DATA		Mxr
Batteries (GEL)	(no.) V/Ah C5	(2) 12/105
Batteries (WET)	(no.) V/Ah C5	(2) 12/110
Battery run time	up to h	2,50
Transport speed	km/h	5,6
Gradeability during transport empty	%	8
Traction motor	V/W	24/300
Machine dimensions (L x h x w)	mm	1265x1030x600
Squeegee width	mm	705-800
Machine weight empty without batteries	kg	112
Batteries weight	kg	78
Sound level (ISO 11201)	dB (A)	63
Minimum aisle turn	mm	1986

## CERTIFICATIONS



For any additional information or for a demo please contact your usual Fimap dealer



FIMAP spa - Via Invalidi del Lavoro, 1 - 37059 S. Maria di Zevio - Verona - Italy  
Tel. +39 045 6060411 - Fax +39 045 6060417 - E-mail: fimap@fimap.com

